

i6310 Quick Reference Guide



1

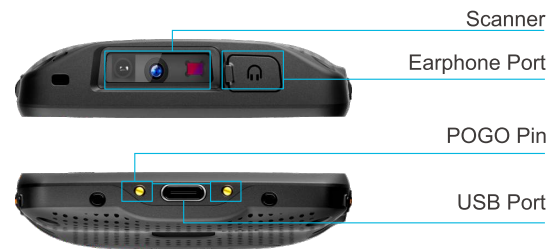
Appearance and Buttons

Front view

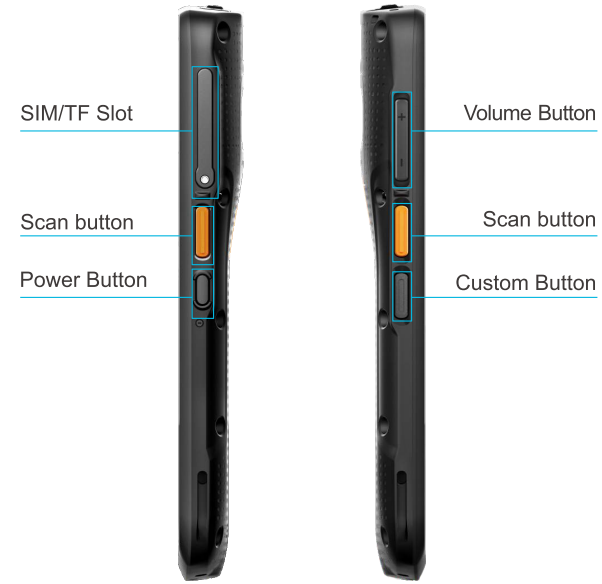


To turn on device: Hold power button until the device switches on.
 To turn off device: Hold power button during operation until the device shows a menu, select "Power off".
 To turn off display: Press the power button .Device also turn off the display automatically if left idle for some time. That amount of time can be configure at "Setting→Display→Sleep"
 To turn on the display: Press the power button lightly .

Side View



2



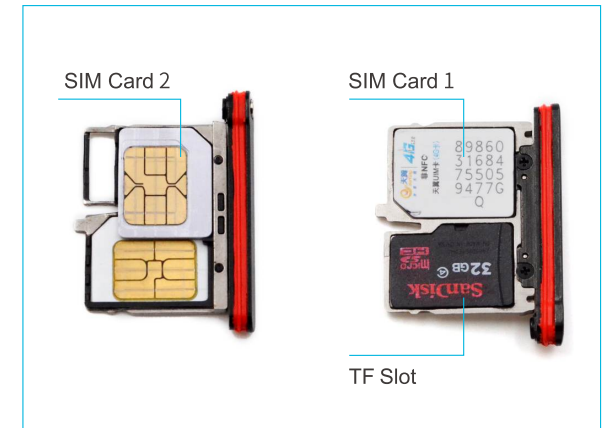
Back View



3

Installing SIM/ TF Card

Take the thimble to remove the right card holder, place the SIM card 1, card 2 and TF card correctly on the card slot (as shown below):



Direct charging instructions

Plug the Type C USB data cable into one end of the power adapter and directly connect one end of the Type C USB data cable to the charging socket of the device for charging. The charging indicator on the device in charging state is red, and the red light is off after the charger is fully charged.

4



Power Adapter



Type-C Data Line

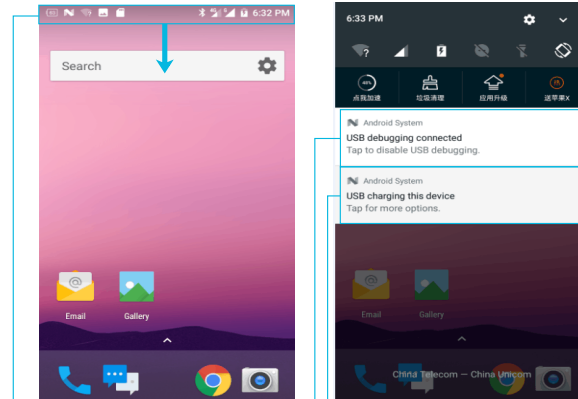
Battery Operation

The device battery is polymer type battery and not removable, which should only be charged by using original power supply. Do not store battery in hot, humid, or corrosive environment. Do not break or crack battery. Do not store battery when it is fully charged completely drained. Note: The battery should be charged for at least 8 hours before the first use.



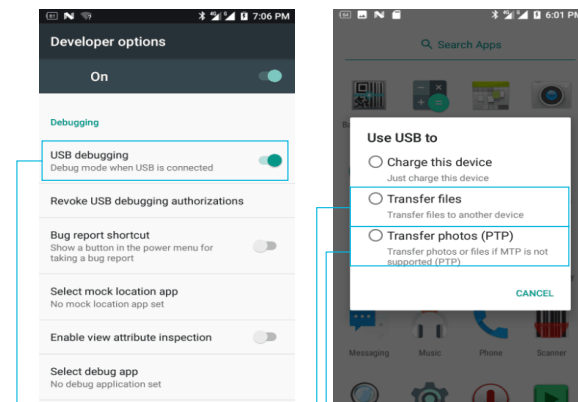
Connecting to PC

After you install the Android driver or an Android smart phone assistant, you can connect the devices to your PC with USB cable provided. (You can download the software mentioned above from www.urovo.com/en. After device connected to your PC, the screen would display like this:



Tap the top of the screen, drag downwards and the USB setting interface will appear.

Click on this to go the next right interface
Click on this to go the next left interface



To turn on debug mode

To transfer pictures
Open the device memory and removable disk

Open the system storage and removable disk at the same time in Windows PC → my computer can view the storage device, and can transfer and store data

Note: If you want to insert a memory card on your device to use it as a removable disk, if you do not insert a memory card, you will not see a removable disk on my computer

Indicator

Battery		Full power
		Medium power
		Charging
Network signal		Low power
		Good signal
		Unstable signal
WiFi	NONE	SIM card not installed
		SIM card error/no service
		WiFi opened. No available wireless networks for connection
NFC		WiFi connected
	NONE	WiFi switched off
		NFC switched on

Precautions

1. Read all information in this guide before using the device to ensure safe and proper operation.
2. Please use the accessories that have been approved by this manufacturer and corresponds to this model. Use of any power source, charger, battery, etc. that has not been approved by this manufacturer may cause a fire, explosion, or other hazards.
3. Please use device and accessories within the specified temperature range. Equipment failure may occur when the ambient temperature is too high or too low.
4. Do not disassemble the product and its accessories. If the equipment or any of its components are not working properly, consult the after-sales service of the company promptly, or send the equipment to the after-sales service outlet for testing and maintenance.
5. The battery is made from a flammable and explosive material. Do not disassemble, squeeze, drop and make any other destructive operations on the battery. Do not place the battery in high temperatures.
6. Disposal of used batteries is subject to local relevant documents or policies regarding disposal of used batteries.

Warranty Policy

Thank you for using Urovo intelligent terminal series products. In the situation of quality problems, which arise from raw materials or production processes, during normal use of purchased products, Urovo Technology Co., Ltd. will be responsible for free maintenance within one year from the date of purchase. The company may provide repairs due to the user's failure to use the product according to the provided instructions of the product. However, corresponding service fee and component fee will be charged.

Warranty regulations:

1. Under normal circumstances, the warranty period of the device is 12 months (3 months for accessories), subject to the sales agreement.
2. During the product warranty period, under the normal use conditions (determined by our technical staff), the user will be entitled to a free warranty for damaged or faulty warranty parts.
3. During the warranty period, faults caused by repair, disassembly or modification of the product by a personnel other than our company, improper installation, improper use by the user (failure to follow instructions), serial number damage, accident or natural disaster, will not be covered under the warranty.
4. The warranty will expire immediately if any alterations are made to the warranty card.
5. Please show the equipment SN and purchase certificate for repair. The company reserves the right to interpret the above contents.

Place of Origin: Shenzhen Quality Inspector: 02

Shenzhen Urovo Technology Co., Ltd.
Call: 400-888-6989 website: www.uovo.com